

## Designing Buildings Wiki

### Featured articles and news

#### [Making the case for rail connectivity](#)



The need for an integrated railway in the Midlands and North.

#### [LSE Centre Building](#)

RSHP project shortlisted for RIBA London award.



#### [Restore or repair?](#)

The Victorian debate about the hazards of architectural improvement.



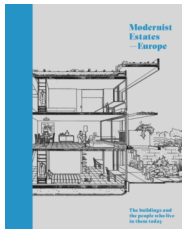
#### [Infrastructure upgrade methods](#)

A quick introduction to 'Renovate-Operate-Transfer'

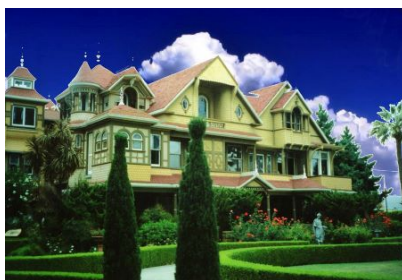


#### [Modernist Estates](#)

The buildings and the people who live in them. Book review.



### Higgledy-piggledy, historic and haunted



Discover the Winchester Mystery House.

### Around the web

#### [Construction Manager, June 8](#)

CIOB, RICS and RIBA support high-rise fire safety measures.

#### [ECA Today, June 5](#)

Reverse charge VAT delayed until March 2021.

#### [Construction Enquirer, June 8](#)

Race starts for the £725m London new homes framework.

#### [The Guardian, June 6](#)

The Golden Gate Bridge railings 'sing'.

#### [Construction Enquirer, June 5](#)

The 'Constructing Better Health' scheme is shutting down.

#### [Essex Live News, June 6](#)

Proposals for a London Resort theme park.

#### [City A.M., June 5](#)

'Build it better', a new approach to procurement.

#### [Construction Manager, June 4](#)

UK construction disputes are now the shortest in the world.

7.5 million people use Designing Buildings Wiki to find construction industry knowledge every year. [Write an article](#) and they will also find out about you.



**Subscribe** to this newsletter

