

View this email in your browser



# Designing Buildings Wiki

The construction industry knowledge base

## Featured articles and news

### Sprinklers



A series of articles from the Business Sprinkler Alliance explain the impact of sprinklers on building design.

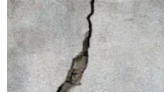
### ICE online archive

The full ICE archive will be made available online as part of the ICE 200 library upgrade.



### Patent defects

Defects are aspects of works not in accordance with the contract. But what are patent defects?



### The country house

A review of essays published by Historic England considering the material culture and consumption of country houses.



### KPMG quit inquiry

KPMG quit their role as advisor to the Grenfell Tower Inquiry after accusations of a conflict of interest.



### Chartered Member - case study

Architectural technologist Ben Whitmore writes about how he became a Chartered Member of CIAT.



### Supply chain payment charter

The payment charter is called a 'dismal failure' as only 35 firms have signed up.



### Key performance indicators



What are key performance indicators and how can they be used on construction projects?

## Around the web

### IHBC, 5 Jan

IHBC add their 100th article to Designing Buildings Wiki.

### RICS, 8 Jan

RICS welcomes the 'small certainties' in Michael Gove's rural announcements.

### BBC, 7 Jan

Carillion will publish a new business plan this week in a bid to avoid collapse.

### U+i, 5 Jan

U+i's CEO Matthew Weiner reflects on how even richer communities can be built in 2018.

### The Guardian, 4 Jan

Grand Designs £27,000 eco-home burns to the ground.

### Construction Index, 5 Jan

Labour shortages are a "good problem to have" says JCB's Lord Bamford.

### Construction Manager, 6 Jan

Nothing we know today is going to be relevant tomorrow.

Designing Buildings Wiki is supported by:

- [Rogers Stirk Harbour + Partners](#)
- [Institution of Civil Engineers](#)
- [BRE Trust](#)
- [The Institute of Historic Building Conservation](#)
- [U and I Group PLC](#)