

View this email in your browser



Designing Buildings Wiki

The construction industry knowledge base

Featured articles and news

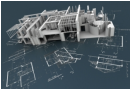
Restoring Kew's Temperate House



One of the great new articles added to Conservation Wiki.
Decimus Burton's monumental Temperate House at Kew is half-way through a £36 million restoration project.

UK BIM Alliance

New industry alliance to lead the transition from mobilising for BIM to making it 'business as usual'.



State of the nation: Devolution

ICE publish a flagship report assessing devolution and the performance of infrastructure.



Unusual building of the week

The Atomium - described by CNN as 'Europe's most bizarre building'.



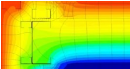
3 World Trade Center

1,000 construction workers celebrate topping out of RSH's new tower in Manhattan.



Thermal modelling guide

Modelling heat loss caused by thermal bridges at junctions and around openings.



Soft landings

Case study: The Medical Research Council's Laboratory of Molecular Biology.



GPS and GNSS

An introduction to global positioning systems and global navigation satellite systems from The Institution of Civil Engineers.



Building of the week - The Louvre



With more than 380,000 objects and 35,000 works of art, the Louvre is the largest museum in the world.

Around the web

Mayor of London, 30 June

Jules Pipe becomes London's deputy mayor for planning, regeneration and skills.

CIOB, June

CIOB reassures its members about their qualifications after Brexit.

RICS, 30 June

Five tips for developing a well-qualified and robust team.

GCR, 29 June

Contractor share prices down amid EU confusion.

The Construction Index, 29 June

Business leaders urge the government to maintain infrastructure spending.

Gov.uk, 28 June

HS2 respond to NAO report which describes the project programme as unrealistic.

BIM plus, 27 June

BIM Around the World - Standardising BIM in the US

The Construction Index, 27 June

The first ship passes through the expanded Panama Canal.

BSRIA, June

BSRIA respond to the referendum and the likely impact on the skills shortage.

Designing Buildings Wiki is supported by:

- [Rogers Stirk Harbour + Partners](#)
- [Institution of Civil Engineers](#)
- [BRE Trust](#)
- [The Institute of Historic Building Conservation](#)
- [U and I Group PLC](#)
- [Chartered Institute of Building](#)
- [BSRIA](#)

[Share](#) [Tweet](#) [Forward](#)

