

View this email in your browser



Designing Buildings Wiki

Newsletter 21 January 2020

Featured articles and news

Bletchley Park restoration



Telling the story of the Government Code and Cipher School.

Grange view

A low-energy, accessible dwelling in a former walled garden.



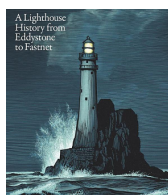
Hagia Sophia

One of the most iconic religious monuments in the world.



Seashaken Houses

Part architectural and social history, part travelogue.

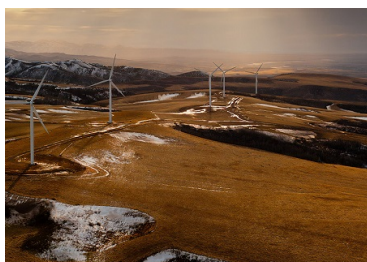


Become our new Editor

Are you passionate about writing with a practical understanding of the construction industry?



Climate change



Key messages from the UN COP 25 conference.

Around the web

Gov.uk, Jan 20

The biggest change in building safety for a generation.

The Guardian, Jan 20

UK house prices rise at the fastest rate on record.

BIM+, Jan 19

Tech alliance will boost the use of AR for hidden infrastructure.

ICE, Jan 16

ICE's largest Certificate Presentation Ceremony takes place in Hong Kong.

GCR, Jan 16

US scientists develop bricks that grow and regenerate.

CIAT, Jan 16

London office block to be built using CLT.

RIBA, Jan 16

The impact of Brexit uncertainty on construction.

6.5 million people use Designing Buildings Wiki to find construction industry knowledge every year. Write an article and they will also find out about you.



Subscribe to this newsletter



Designing Buildings Wiki is supported by:

Rogers Stirk Harbour + Partners
Institution of Civil Engineers
BRE Trust
The Institute of Historic Building Conservation
Chartered Institute of Building