



DESIGNING BUILDINGS WIKI

Put all construction industry knowledge in one place
Integrated, collaborative, free

Y:Cube

Y:Cube is an affordable housing unit designed by Rogers Stirk Harbour + Partners (RSHP). The Y:Cube units are 26m² one-bed studios for single occupancy that arrive on site as self-contained units. [Read more](#)



Data drops

To ensure BIM projects are properly validated and controlled, data is extracted from the evolving model and submitted to the client at key milestones. This submission of data is described as a "data drop"™. [Read more](#)



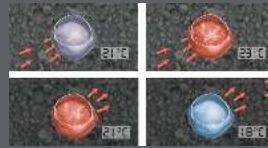
DC electricity networks

Why convert your solar power from DC to AC when you could just use the DC instead? [Read more](#)



Phase change materials

Phase change materials (PCM) can be used to reduce internal temperature change by storing latent heat in the solid-liquid phase change of a material. [Read more](#)



SuDS

KLH Sustainability ask - Are sustainable urban drainage systems the response to our changing climate? [Read more](#)



Case law

Najma Dunnett reports on 199 Knightsbridge Development v WSP.

Prevailing industry practice does not excuse the defendant of their professional duty of care, however, even with proper advice, the claimant was unlikely to have acted. [Read more](#)



Stats

They keep on going up - check out our latest stats. [Read more](#)

Designing Buildings Wiki is supported by:

[Rogers Stirk Harbour + Partners](#)
[BRE Trust](#)
[Buro Happold](#)
[Development Securities PLC](#)
[The Chartered Institute of Building](#)

