

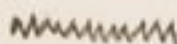
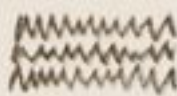
Handwritten text, mostly illegible due to fading and blurring. It appears to be a series of lines of text, possibly a list or a description.



		1111111111	
		1111111111	
		1111111111	
		1111111111	
		1111111111	

Handwritten text, mostly illegible due to fading and blurring. It appears to be a series of lines of text, possibly a list or a description.





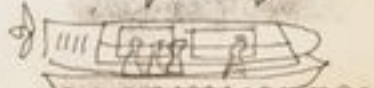
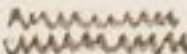
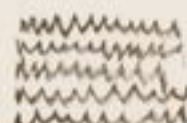
Handwritten text in a stylized script, possibly a form of shorthand or a specific dialect.



Handwritten text in a stylized script, possibly a form of shorthand or a specific dialect.



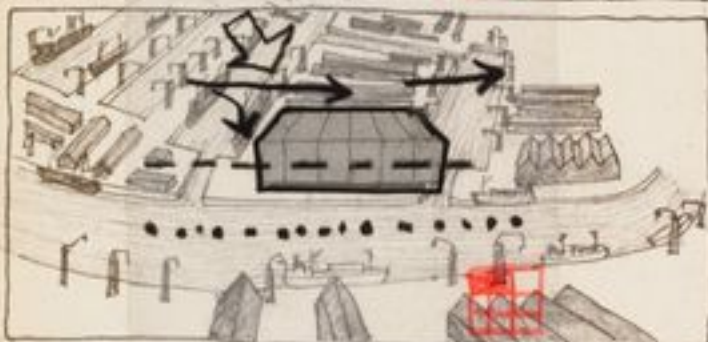
Handwritten text in a stylized script, possibly a form of shorthand or a specific dialect.





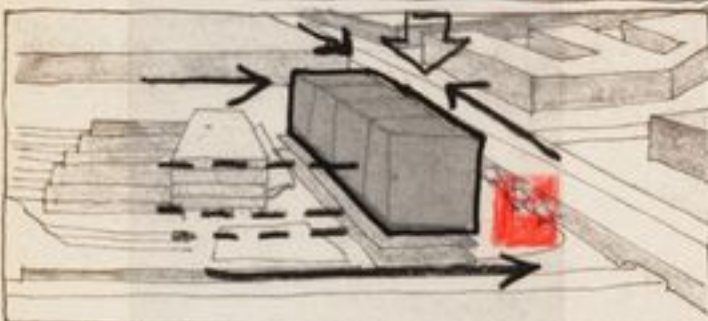
MILL MEADS

Hand-drawn sketch of a site plan for Mill Meads, showing a central rectangular building and surrounding areas with arrows.



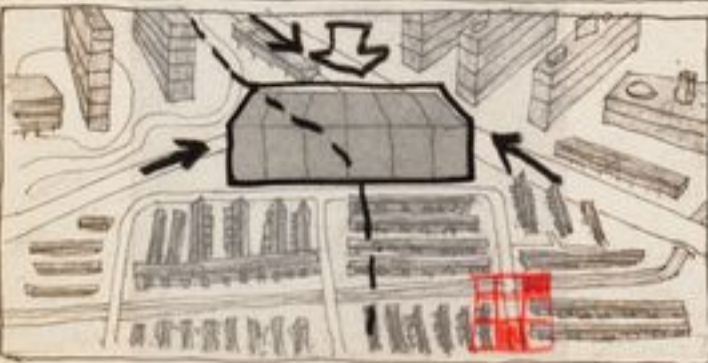
ISLE OF DOGS

Hand-drawn sketch of a site plan for Isle of Dogs, showing a central rectangular building and surrounding areas with arrows.



EUSTON

Hand-drawn sketch of a site plan for Euston, showing a central rectangular building and surrounding areas with arrows.

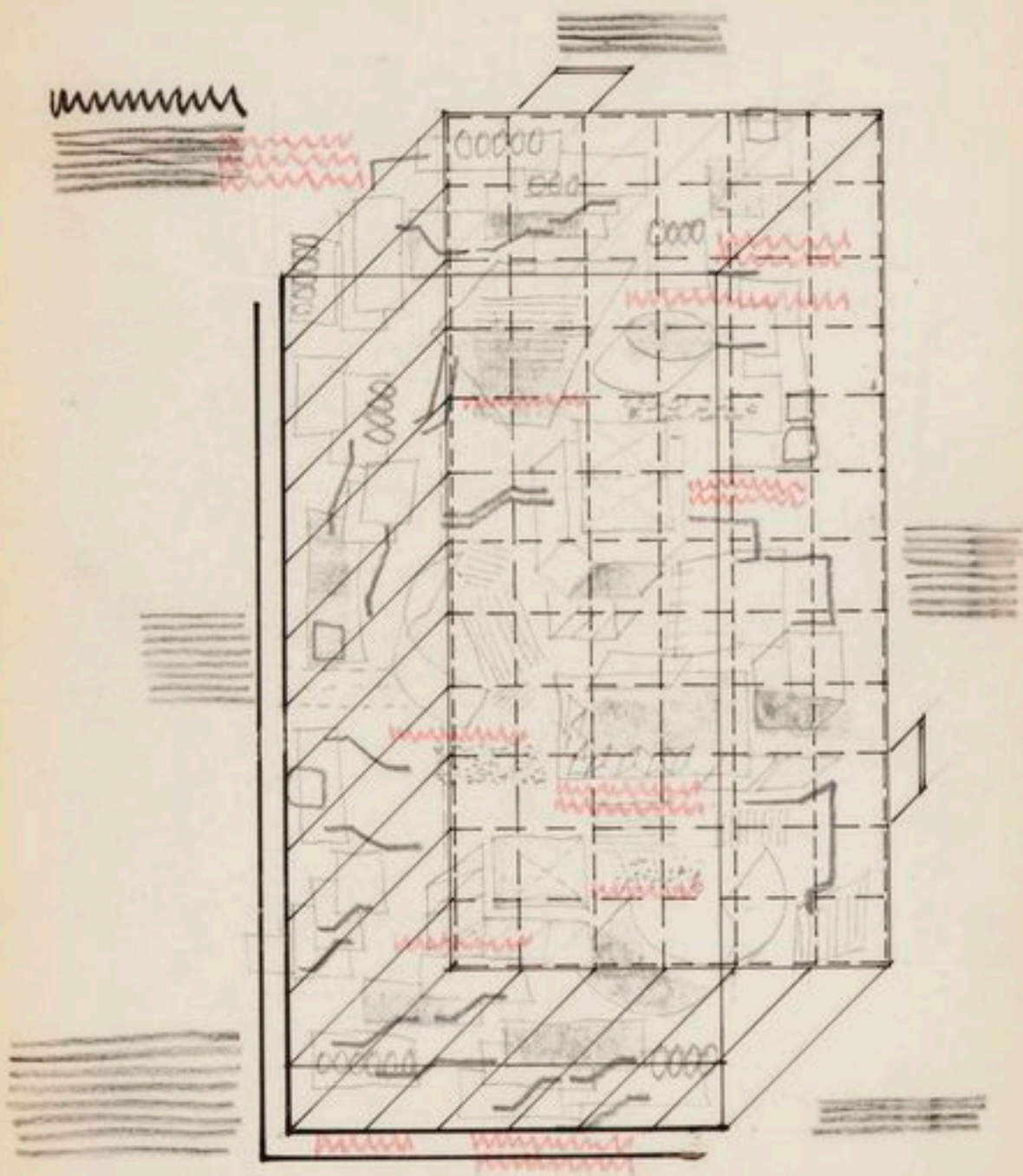


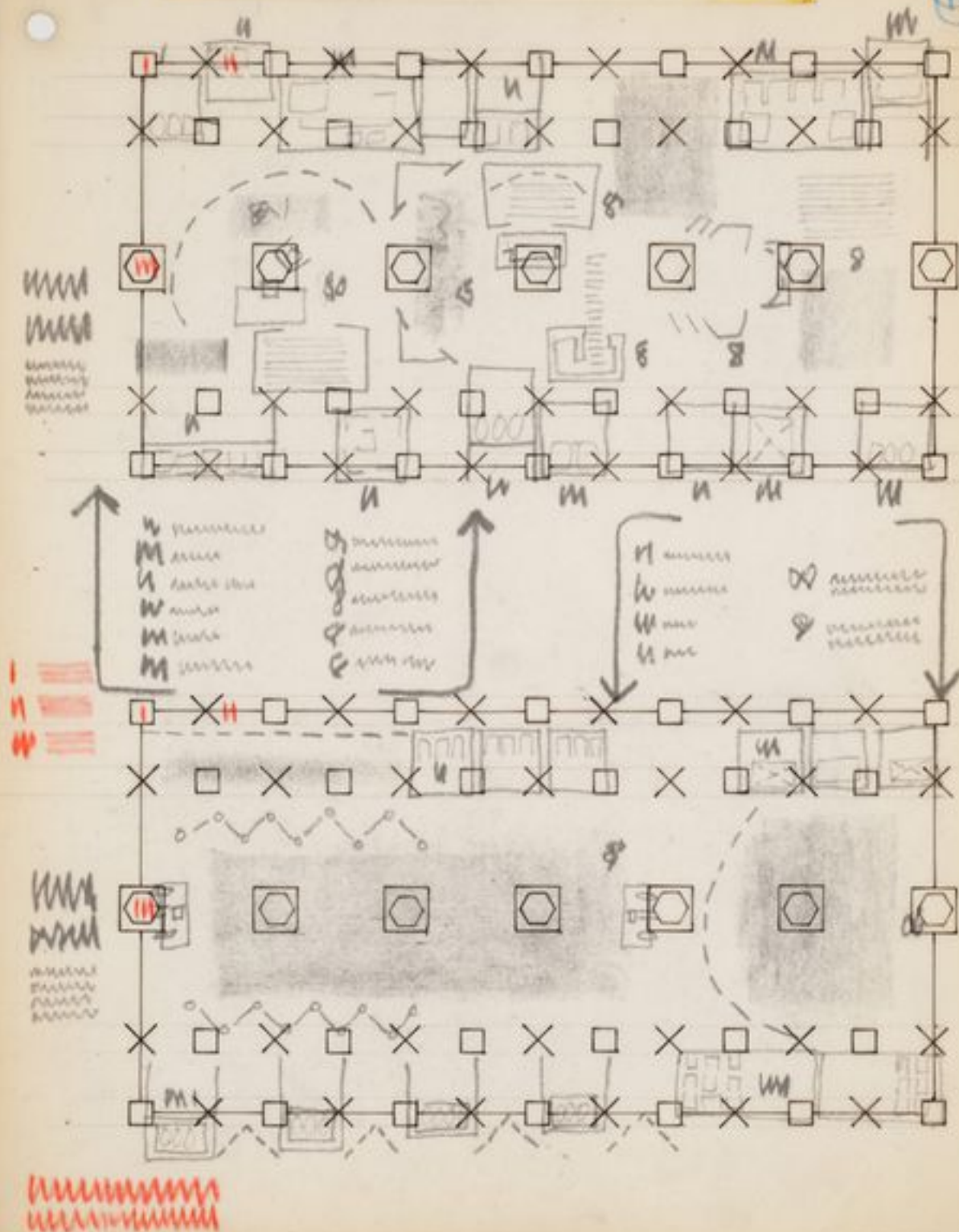
CAMBERWELL S.H.P.

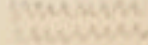
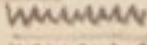
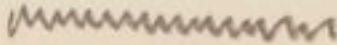
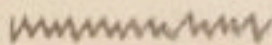
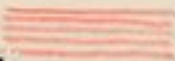
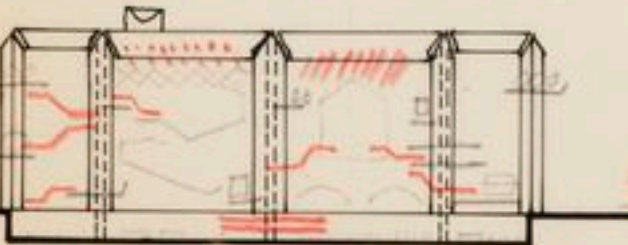
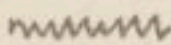
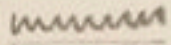
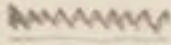
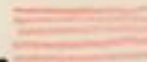
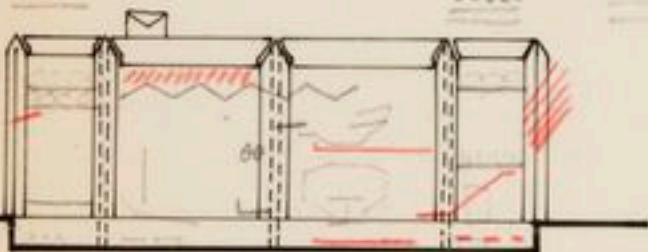
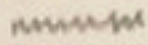
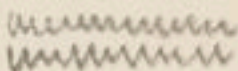
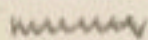
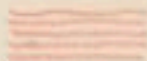
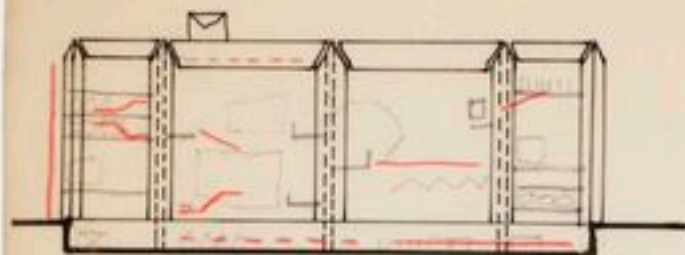
Hand-drawn sketch of a site plan for Camberwell S.H.P., showing a central rectangular building and surrounding areas with arrows.













1st Draft.

### PROBLEM GAMES

- "Co-operative Machines" worked by two or three people.  
Object - communication of precise information, the development of speed in observation and deduction, collaboration.
- Reading machines with joke scripts.  
Object - the development of pace, memory and wit.
- Puzzle picture observation.  
Object - to spot errors.
- "Fox and Geese" games - spotting recurrent images on a quick-moving pattern.

These have been developed and many others will be devised for the project by Gordon Park of Systems Research.

### SOCIAL OBSERVATION.

To develop an awareness of our society it is proposed, in collaboration with various authorities such as the National Coal Board, Zoological Society, National Farmers' Union, S.B.C., L.C.C., that television cameras cover various key areas for 24 hour periods.

E.G:	(Coal Mines	(Monkey Hill	(Farms
	(Steel mills	(The Aquarium	(Forests
	(Docks	(Insect House	(Rivers
	(New Industrial Plant	( etc.	(Harbours
Outside	(The House of Commons	(Newington Lodge	(Police Court
	(Theatres	(Church Army	(Casualty Dept.
	(Cinemas	( Britannia St.	( of a Hospital
	(White's or Boodles	(Lisle St. or	
		( Cable St.	
		(A suburban bus	
		( stop	

Object - to observe such environments without the aid of editing or art.

### ZONE 2

Participation in new forms of expression.

- Our taste for disaster and the theatrical delights of war and violence are only put to good use when we participate in useful fights:- against disease, death, ignorance, want, boredom. Those who have freed themselves in the twilight prehistory in which we still linger are called artists and scientists. Soon their function will be taken over by a higher proportion of the population.
- Experiments in collaboration on the examination of important social problems have been carried on in Theatre Workshop for twenty years. Sometimes with full time workers in the organisation, sometimes with people working in industry. Some of the wide products of this work have been sold as entertainment, played in chapels, miners' halls,

cont...