

View this email in your browser



# Designing Buildings Wiki

Newsletter 8 February 2019

## Featured articles and news

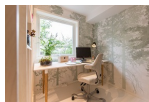
### Whole life asset performance



How to stay ahead of the game.

### Biophilic design

Sustainability and the 14 patterns of biophilic design.



### Human-centric lighting

How new lighting strategies will change the workplace.



### 3D printing

Just how practical is this technology for construction?

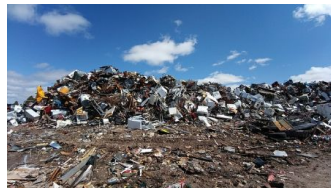


### Copronet

A new digital hub helps users connect, collaborate and grow.



### Supporting the circular economy



How materials passports and reversible building design protocols can help.

## Around the web

### ICE, 6 Feb

MP to chair infrastructure parliamentary group.

### Gov.uk, 7 Feb

The government seeks views on light rail schemes.

### Dezeen, 5 Feb

China creates the world's longest 3D-printed bridge.

### 24housing, 6 Feb

More than 165,000 homes for social rent have been lost in six years.

### IHBC, 5 Jan

Relaxation of permitted development rights.

### ECA, 4 Feb

Government plans for electrical safety in the private rented sector.

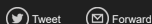
### Construction Enquirer, 6 Feb

HS2 awards contracts for London stations worth £2.3bn.

### The Construction Index, 5 Feb

The crane count suggests construction is booming.

5 million people use Designing Buildings Wiki to find construction industry knowledge every year. [Write an article](#) and they will also find out about you.



Designing Buildings Wiki is supported by:

- Rogers Stirk Harbour + Partners
- Institution of Civil Engineers
- RICS Trust
- The Institute of Historic Building Conservation
- Chartered Institute of Building
- BSRIA
- ECA
- Chartered Institute of Architectural Technologists

Our mailing address is:

Designing Buildings  
Kirkcass  
Old Road  
Buckland, Surrey RH3 7DZ  
United Kingdom

Add us to your address book

Want to change how you receive these emails?  
You can update your preferences or unsubscribe from this list.