

View this email in your browser



Designing Buildings Wiki

Newsletter 26 February 2019

Featured articles and news

Walking interviews



It is easier to talk about a place when you are experiencing its sights, sounds and smells.

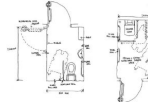
Engineering cities

Can we build cities that anticipate the future?



Special educational needs

Analysing the necessities for inclusion.



Infrastructure

Breaking down barriers and maximising tech opportunities.



BREEAM Sustainability Champions

Helping achieve targets and maximising performance.



Carbon standards for buildings



Do you know the difference between net zero energy, carbon neutral, net zero carbon, zero carbon and carbon positive?

Around the web

CLC, Feb 22
No deal Brexit plan for construction.

Gov.uk, Feb 22
First look at HS2's Washwood Heath depot site.

Construction Enquirer, Feb 25
Liverpool flyovers to be demolished due to safety fears.

BIM+, Feb 24
Digital twins are a natural progression for BIM.

The Construction Index, Feb 22
Sales growth slows at UK builders' merchants.

CIAT, Feb 21
Recycled tyres can improve concrete fire resistance.

GCR, Feb 21
Robots will be used to build a museum in Seoul.

Construction Manager, 25 Feb
Interserve to publish rescue plan details this week.

5 million people use Designing Buildings Wiki to find construction industry knowledge every year. [Write an article](#) and they will also find out about you.

Tweet Forward



Designing Buildings Wiki is supported by:
Rogers Stirk Harbour + Partners
Institution of Civil Engineers
BRE Trust
The Institute of Historic Building Conservation
Chartered Institute of Building
BSRIA
ECA
Chartered Institute of Architectural Technologists

Our mailing address is:
Designing Buildings
Kirkcass
Old Road
Buckland, Surrey RH3 7DZ
United Kingdom

Add us to your address book

Want to change how you receive these emails?
You can update your preferences or unsubscribe from this list.