



Newsletter 1 September 2023 | [View on the web](#)

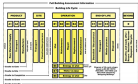
Features and news



From the public bath to the lido
Communities fighting to bathe.



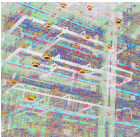
Sustainability and stainless steel
Identical products with radically different carbon footprints.



Environmental impact categories
Mandatory, optional and core product category rules.



Material take-off
Terms and tools.



The evolution of BIM models
Risk, quantities, sequencing and maintenance.

DESIGNINGBUILDINGS
THE CONSTRUCTION WIKI

Find knowledge for free

Around the web



Heritage Awards, June 23
Cleveland Pools, reopened by community campaign.



HES, August 29
Heritage professional learning programme launched.



ECA, August 23
Ovo to pay customers to use off-peak green energy.



IHBC, August 29
PDF - A digital hammer for the built environment.



BIM+, August 29
Summit tackles data on HS2 and ESG.

Designing Buildings is supported by:

The Institute of Historic Building Conservation
Chartered Institute of Building
BSRIA
ECA
Chartered Institute of Architectural Technologists
Association for Project Management

Our mailing address is:
Designing Buildings
Kirkleas
Old Road
Buckland, Surrey RH3 7DZ
United Kingdom