

View this email in your browser

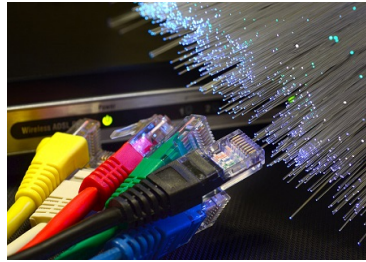


# Designing Buildings Wiki

Newsletter 4 February 2020

## Featured articles and news

### Digital connectivity



The roll-out of full-fibre and gigabit-capable broadband.

### Contract terms

What is vicarious performance?



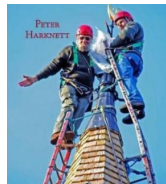
### Innovative structures

The geodesic dome.



### Life at the top

A steeplejack's view of Life. Book review.



### Structural testing

Timber lattice columns for low-rise construction.



### Wartime Orkney



An Art Deco cinema built by the Royal Engineers.

## Around the web

### BSRIA, Feb 3

Thermal imaging guide for new homes.

### ECA, Feb 3

ECA warns over SME apprenticeships' funding.

Download your free e-book

Applications for payment. What to include and when they are rejected.



### BIM+, Feb 2

New software promises faster, lower-carbon building frames.

### IHBC, Jan 31

Study values England's heritage at £31 billion.

### RIBA, Jan 31

Post-Brexit priorities for the government.

### Gov.uk, Jan 30

Building Better, Building Beautiful report.

### Dezeen, Jan 28

Frank Lloyd Wright's Taliesin school to close.

6.5 million people use Designing Buildings Wiki to find construction industry knowledge every year. Write an article and they will also find out about you.



Subscribe to this newsletter



Designing Buildings Wiki is supported by:

- Rogers Stirk Harbour + Partners
- Institution of Civil Engineers
- BRE Trust
- The Institute of Historic Building Conservation
- Chartered Institute of Building
- BSRIA
- ECA
- Chartered Institute of Architectural Technologists

Our mailing address is: