

View this email in your browser



Designing Buildings Wiki

The construction industry knowledge base

Featured articles and news

Conservative surgery



Throughout the 20th century, Edinburgh and its council wavered between 'conservative surgery' and more sweeping solutions.

Off-site construction

How timber can be used for modern methods of construction.



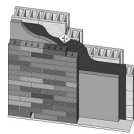
CONIAN

HSE set up an advisory network to help improve workplace safety.



Cavity wall

Cavity walls existed in Roman times, but only became common at the beginning of the 20th century.



Electrical networks

A BRE Information Paper explains the use of flexible electrical networks for a low carbon future.



Tender evaluation

The process of assessment used to identify a preferred tenderer.



Vessel, New York



Thomas Heatherwick's staircase monument tops out after 8 months of construction.

Around the web

BIMplus, 11 Dec

Overcoming the reluctance to adopt BIM is the key to construction's future.

Gov.uk, 11 Dec

90% of councils are part of a programme to create jobs and release land for homes.

CITB, 8 Dec

How should we teach sustainable construction?

Construction Index, 8 Dec

Construction under-payers are named and shamed by the government.

CIAT, 7 Dec

CIAT launches a BIM Level 2 suite of films.

Construction Manager, 11 Dec

Voting opens for the Art of Building photography prize.

GCR, 7 Dec

A Norwegian contractor will build the world's tallest timber building.

Designing Buildings Wiki is supported by:

- [Rogers Stirk Harbour + Partners](#)
- [Institution of Civil Engineers](#)
- [BRE Trust](#)
- [The Institute of Historic Building Conservation](#)
- [U and I Group PLC](#)
- [Chartered Institute of Building](#)