

View this email in your browser



BRE Trust



Designing Buildings Wiki

The construction industry knowledge base

Featured articles and news

Blue Book



BSRIA publish the 2017 edition of the Blue Book, providing hard-to-find facts about building services.

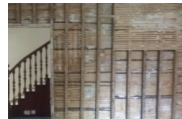
New concrete printer

CyBe unveil a new mobile 3D concrete printer - 'the next step to a fully automated integrated printing system'.



Renovation

An introduction to the process and common pitfalls of renovating properties.



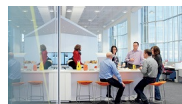
Lillehammer Art Museum and Cinema

Snøhetta complete a striking new extension to the Lillehammer Art Museum and Cinema in Norway.

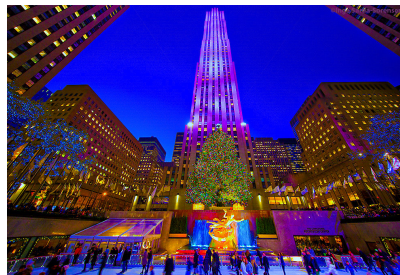


What we know about wellbeing

BSRIA plot a course through the maze of health and wellbeing.



Featured building



Backdrop to one of the most iconic Christmas trees in the world, the Rockefeller Center in Manhattan.

Around the web

Construction Dive, 22 Dec

Technology trends that defined construction in 2016.

UK-GBC, 22 Dec

UK-GBC respond to the government's Bonfield Review of energy efficient homes.

Construction Manager, 22 Dec

Qatar University develops a solar-powered hard hat with a built-in fan.

Dezeen, 21 Dec

Owen Hatherley writes about Letchworth, the original garden city.

RICS, 21 Dec

UK house prices to increase by 3% in 2017 as the number of transactions stabilises.

GCR, 21 Dec

French joint venture formed to produce smart-glass windows.

Construction Index, 21 Dec

Figures reveal the CITB funded just 0.05% of construction SMEs during 2016.

Designing Buildings Wiki is supported by:

[Rogers Stirk Harbour + Partners](#)
[Institution of Civil Engineers](#)

[BRE Trust](#)

[The Institute of Historic Building Conservation](#)
[U and I Group PLC](#)

[Chartered Institute of Building](#)
[BSRIA](#)