

View this email in your browser



BRE Trust

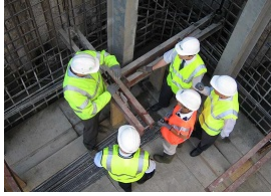


Designing Buildings Wiki

The construction industry knowledge base

Featured articles and news

Design and construction fees



It's a controversial subject, so you may not agree with everything this article says - but as we're a Wiki, you can always change it...

RSHP at Open House 2016

Five RSHP-designed projects are open to the public as part of Open House London 2016.



Featured building

The newly-completed 'pixelated' tower is now the tallest building in Thailand.



London by Design

A new book looks at the iconic transport designs that shaped London.



TSI environmental dust monitoring

The environmental dust monitoring equipment that has been used in projects in Botswana and Iceland.



Chinese renaissance architecture



An aesthetic created by a group of primarily American-trained, first-generation Chinese architects.

Around the web

The Guardian, 30 Aug

Which London buildings were lost 350 years ago in the Great Fire of 1666?

ICE, 30 Aug

ICE ambassadors inspire school children with the Bridges to Schools initiative.

BSRIA, 27 Aug

Results of a Brexit survey suggest exit clarification is needed.

Parliament, 26 Aug

The Women and Equalities Committee launches an inquiry into the accessibility of homes, buildings and public spaces.

GCR, 26 Aug

Suspended 'caterpillar' rail transit system wins MIT award.

Construction Index, 26 Aug

New ISO standard developed to help tower cranes resist earthquakes.

BRE Buzz, 26 Aug

2 years on from the launch of the YellowJacket app, there has been a 124% increase in near miss reporting.

Designing Buildings Wiki is supported by:

[Rogers Stirk Harbour + Partners](#)

[Institution of Civil Engineers](#)

[BRE Trust](#)

[The Institute of Historic Building Conservation](#)

[U and I Group PLC](#)

[Chartered Institute of Building](#)

[BSRIA](#)



Share



Tweet



Forward



Facebook



Twitter



Website



Email



Google Plus



LinkedIn



YouTube