

WORLDS FIRST GROWING ARCHITECTURE

TOMORROW'S CHALLENGES IN TODAY'S

We have not inherited the earth from our parents, we are borrowing it from our children. Analyses showed that 4,6% in the current energy balance of The Netherlands is coming from renewable energy sources. We also learned that 40% of the current CO2 emission is coming from the build environment. Buildings like we see everyday.

Our buildings need electricity and materials that contribute to climate change by emitting CO2. What if we can turn this negative given fact into new possibilities. What if our future buildings could absorb CO2 and generate renewable energy, instead of emitting CO2. We could kill 2 birds with 1 stone. I present to you: Worlds first growing architecture. We are creating a modular building element that is growing, absorbing CO2 and generating renewable energy.



GEERT-JAN KRUL
A CRITIC FROM
THE MUNICIPALITY



LEONARDO DI CAPRIO
ACTIVIST / MOVIE STAR



ROB HERBERICHS
MASTER STUDENT
TU Eindhoven

WE USE SO MUCH CO2

CLIMATE CHANGE IS REAL

LET'S GROW ARCHITECTURE



RENEWABLE ENERGY IS ONLY 4,6% OF THE TOTAL ENERGY BALANCE



THE HVAC SYSTEM WE USE NOWADAYS ARE BAD FOR THE ENVIRONMENT AND OUR MONEY



THE SUSTAINABLE CITY HEAT IS SURPLUS HEAT FROM A CO2-EMITTING POWER PLANT NEARBY



10-15% OF THE TOTAL OUTLET CO2 EMISSION IS COMING FROM THE BUILD ENVIRONMENT



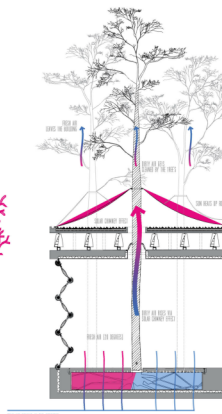
THERE IS A CONTINUOUS NEED FOR CHANGE IN OUR FAST MODERN SOCIETY



FUTURE OVER POPULATION IS FORCING US TO WORK CLOSER WITH NATURE



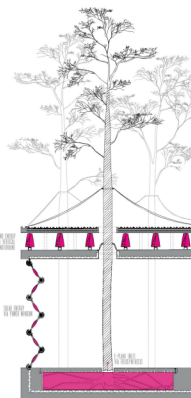
A MODULAR BUILDING SYSTEM THAT ABSORBS CO2



CO2 RELEASE IN 10 SECONDS

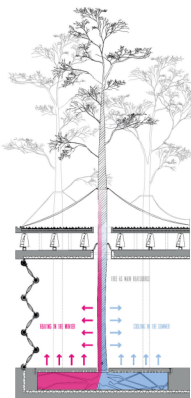
VENTILATION

Fresh air is sucked into the building up of levels outside the building. The fresh air is controlled by the climate temperature of the building. Once it enters the building the water base elements cool down/heats up the fresh air to the comfortable temperature of choice via the temperature of the water. The incoming natural air rises due to the principle of the chimney created by the 2 layers of ETE foil on the roof. Once the dirty air finds its way out, it goes out and the fresh air above our building, from fresh air to fresh air.



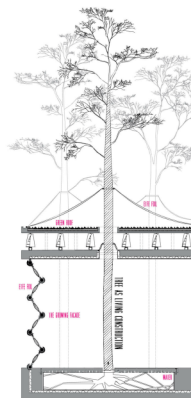
ELECTRICITY

We don't want to be energy neutral, we need to be energy positive. Providing the surrounding building with our surplus renewable energy. We use the elements of nature to generate electricity, we make use of the sun via the integrated solar cells on the ETE foil. We make use of the wind via our vertical wind turbines. And lastly we make use of the process of photosynthesis to generate electricity for the power inlet integrated in the tree.



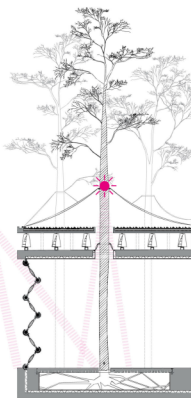
HEATING AND COOLING

The building is heated and cooled via an electric heat pump. The water inside the building is used for heating and cooling. The water is warmed or cooled to the comfortable temperature of choice. Via the niches inside the floor elements the warmth or coolness is spread. Not only via the floor, the temperature is spread, but also via the tree above trees adjust to their environment and root temperature.



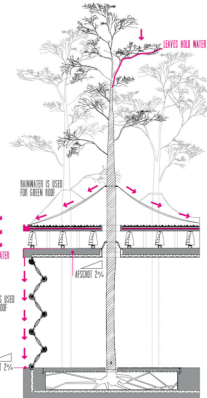
MATERIALS

The most important element of our building concept is the local growing tree-like structure. As a complete system for the surrounding, the living tree provides visitors with perfect air quality and fresh oxygen. The entire planted elements are made from bio composite. This material is very strong and lightweight, therefore well suited for a modular system that travels the air via domes. The last material we use is ETE foil. In this design we use it for solar generation, insulation and windows. All elements are connected with modular and dry, connectively providing flexibility for the constant demand of change.



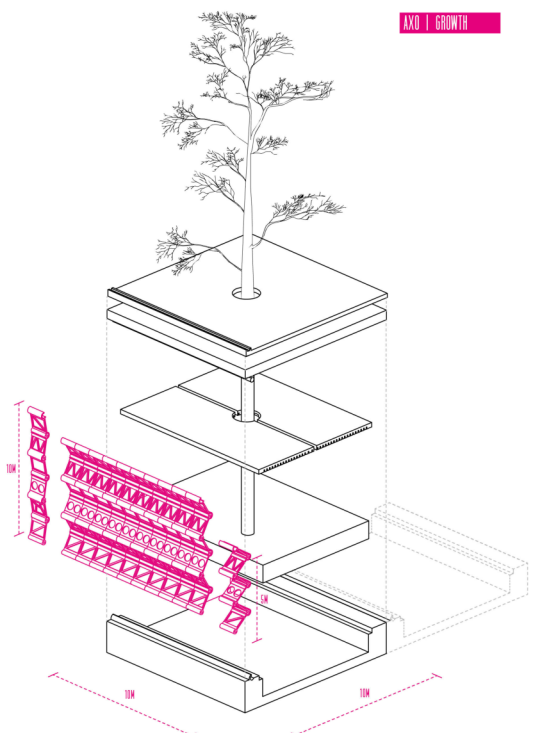
DAYLIGHT

Daylight enters the building via the facade and via the roof. It both cases the light enters through the ETE foil, offering high degrees of transparency. ETE foil will allow most rays to pass through it. Depending on the exact application, up to 90% of the natural light that hits on ETE roof will pass through. This has the highly advantageous benefit of allowing the solid lighting time to be part of the design because UV light is necessary for photovoltaics.



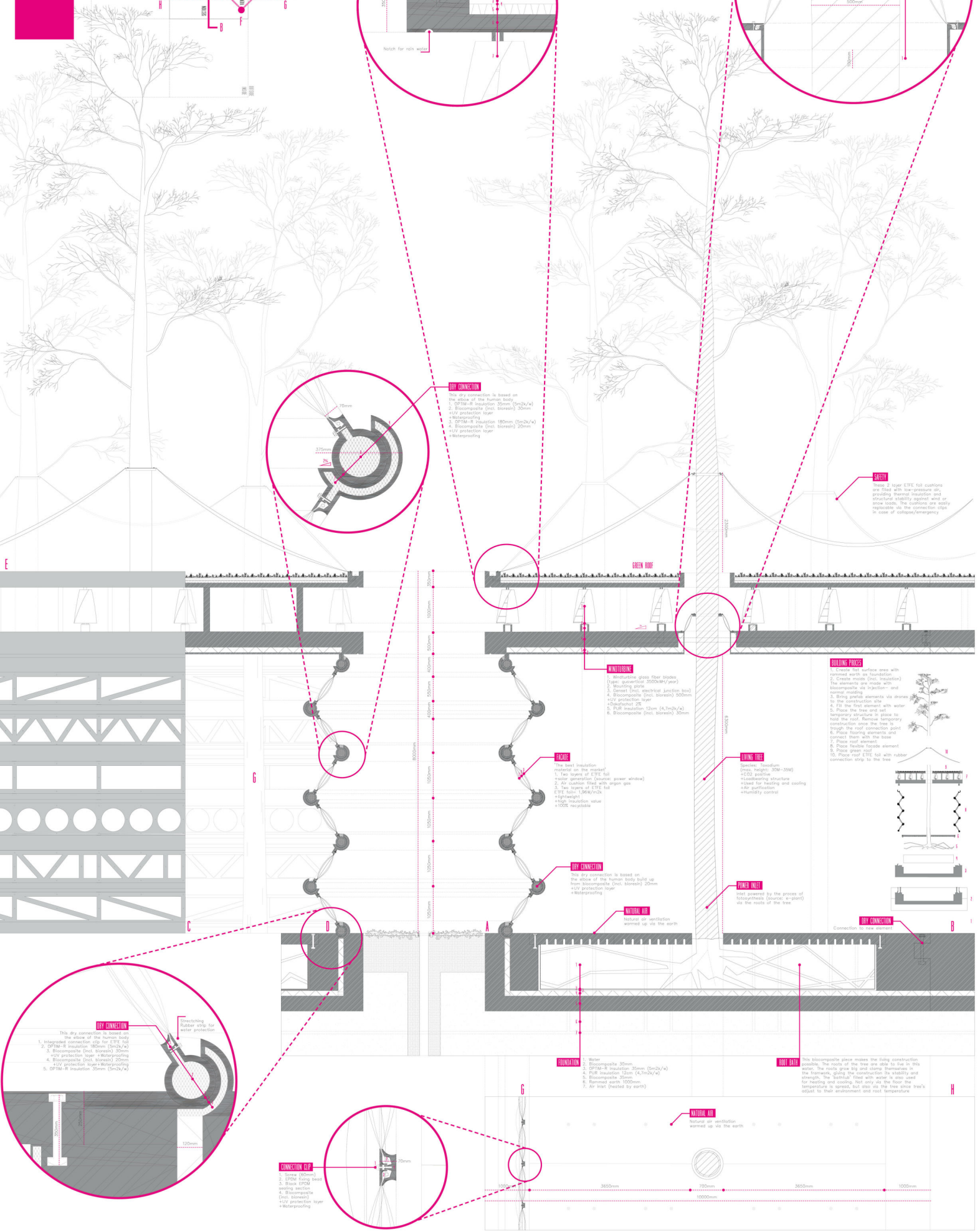
WATERPROOF

Especially in the Netherlands we have a lot of rain, via the trees the water drops onto the ETE foil, even if there is a lot of rain coming from the side will be redirected along the facade via the niches in the roof element. In case of a heavy storm the ETE foil is resistant. Because the ETE composite are filled with low-pressure air and argon gas, providing thermal insulation and structural stability against heavy wind or snow loads.



AXO 1. GROWTH

1999, 2000, 2001, 2002, 2003, 2004, 2005, 2006, 2007, 2008, 2009, 2010, 2011, 2012, 2013, 2014, 2015, 2016, 2017, 2018, 2019, 2020, 2021, 2022, 2023, 2024, 2025, 2026, 2027, 2028, 2029, 2030, 2031, 2032, 2033, 2034, 2035, 2036, 2037, 2038, 2039, 2040, 2041, 2042, 2043, 2044, 2045, 2046, 2047, 2048, 2049, 2050, 2051, 2052, 2053, 2054, 2055, 2056, 2057, 2058, 2059, 2060, 2061, 2062, 2063, 2064, 2065, 2066, 2067, 2068, 2069, 2070, 2071, 2072, 2073, 2074, 2075, 2076, 2077, 2078, 2079, 2080, 2081, 2082, 2083, 2084, 2085, 2086, 2087, 2088, 2089, 2090, 2091, 2092, 2093, 2094, 2095, 2096, 2097, 2098, 2099, 2100, 2101, 2102, 2103, 2104, 2105, 2106, 2107, 2108, 2109, 2110, 2111, 2112, 2113, 2114, 2115, 2116, 2117, 2118, 2119, 2120, 2121, 2122, 2123, 2124, 2125, 2126, 2127, 2128, 2129, 2130, 2131, 2132, 2133, 2134, 2135, 2136, 2137, 2138, 2139, 2140, 2141, 2142, 2143, 2144, 2145, 2146, 2147, 2148, 2149, 2150, 2151, 2152, 2153, 2154, 2155, 2156, 2157, 2158, 2159, 2160, 2161, 2162, 2163, 2164, 2165, 2166, 2167, 2168, 2169, 2170, 2171, 2172, 2173, 2174, 2175, 2176, 2177, 2178, 2179, 2180, 2181, 2182, 2183, 2184, 2185, 2186, 2187, 2188, 2189, 2190, 2191, 2192, 2193, 2194, 2195, 2196, 2197, 2198, 2199, 2200, 2201, 2202, 2203, 2204, 2205, 2206, 2207, 2208, 2209, 2210, 2211, 2212, 2213, 2214, 2215, 2216, 2217, 2218, 2219, 2220, 2221, 2222, 2223, 2224, 2225, 2226, 2227, 2228, 2229, 2230, 2231, 2232, 2233, 2234, 2235, 2236, 2237, 2238, 2239, 2240, 2241, 2242, 2243, 2244, 2245, 2246, 2247, 2248, 2249, 2250, 2251, 2252, 2253, 2254, 2255, 2256, 2257, 2258, 2259, 2260, 2261, 2262, 2263, 2264, 2265, 2266, 2267, 2268, 2269, 2270, 2271, 2272, 2273, 2274, 2275, 2276, 2277, 2278, 2279, 2280, 2281, 2282, 2283, 2284, 2285, 2286, 2287, 2288, 2289, 2290, 2291, 2292, 2293, 2294, 2295, 2296, 2297, 2298, 2299, 2300, 2301, 2302, 2303, 2304, 2305, 2306, 2307, 2308, 2309, 2310, 2311, 2312, 2313, 2314, 2315, 2316, 2317, 2318, 2319, 2320, 2321, 2322, 2323, 2324, 2325, 2326, 2327, 2328, 2329, 2330, 2331, 2332, 2333, 2334, 2335, 2336, 2337, 2338, 2339, 2340, 2341, 2342, 2343, 2344, 2345, 2346, 2347, 2348, 2349, 2350, 2351, 2352, 2353, 2354, 2355, 2356, 2357, 2358, 2359, 2360, 2361, 2362, 2363, 2364, 2365, 2366, 2367, 2368, 2369, 2370, 2371, 2372, 2373, 2374, 2375, 2376, 2377, 2378, 2379, 2380, 2381, 2382, 2383, 2384, 2385, 2386, 2387, 2388, 2389, 2390, 2391, 2392, 2393, 2394, 2395, 2396, 2397, 2398, 2399, 2400, 2401, 2402, 2403, 2404, 2405, 2406, 2407, 2408, 2409, 2410, 2411, 2412, 2413, 2414, 2415, 2416, 2417, 2418, 2419, 2420, 2421, 2422, 2423, 2424, 2425, 2426, 2427, 2428, 2429, 2430, 2431, 2432, 2433, 2434, 2435, 2436, 2437, 2438, 2439, 2440, 2441, 2442, 2443, 2444, 2445, 2446, 2447, 2448, 2449, 2450, 2451, 2452, 2453, 2454, 2455, 2456, 2457, 2458, 2459, 2460, 2461, 2462, 2463, 2464, 2465, 2466, 2467, 2468, 2469, 2470, 2471, 2472, 2473, 2474, 2475, 2476, 2477, 2478, 2479, 2480, 2481, 2482, 2483, 2484, 2485, 2486, 2487, 2488, 2489, 2490, 2491, 2492, 2493, 2494, 2495, 2496, 2497, 2498, 2499, 2500, 2501, 2502, 2503, 2504, 2505, 2506, 2507, 2508, 2509, 2510, 2511, 2512, 2513, 2514, 2515, 2516, 2517, 2518, 2519, 2520, 2521, 2522, 2523, 2524, 2525, 2526, 2527, 2528, 2529, 2530, 2531, 2532, 2533, 2534, 2535, 2536, 2537, 2538, 2539, 2540, 2541, 2542, 2543, 2544, 2545, 2546, 2547, 2548, 2549, 2550, 2551, 2552, 2553, 2554, 2555, 2556, 2557, 2558, 2559, 2560, 2561, 2562, 2563, 2564, 2565, 2566, 2567, 2568, 2569, 2570, 2571, 2572, 2573, 2574, 2575, 2576, 2577, 2578, 2579, 2580, 2581, 2582, 2583, 2584, 2585, 2586, 2587, 2588, 2589, 2590, 2591, 2592, 2593, 2594, 2595, 2596, 2597, 2598, 2599, 2600, 2601, 2602, 2603, 2604, 2605, 2606, 2607, 2608, 2609, 2610, 2611, 2612, 2613, 2614, 2615, 2616, 2617, 2618, 2619, 2620, 2621, 2622, 2623, 2624, 2625, 2626, 2627, 2628, 2629, 2630, 2631, 2632, 2633, 2634, 2635, 2636, 2637, 2638, 2639, 2640, 2641, 2642, 2643, 2644, 2645, 2646, 2647, 2648, 2649, 2650, 2651, 2652, 2653, 2654, 2655, 2656, 2657, 2658, 2659, 2660, 2661, 2662, 2663, 2664, 2665, 2666, 2667, 2668, 2669, 2670, 2671, 2672, 2673, 2674, 2675, 2676, 2677, 2678, 2679, 2680, 26



CONNECTION CLIP

1. Screw (60mm)
2. EPDM fixing bead
3. Black EPDM seating section
4. Biocomposite (incl. bioresin) +UV protection layer +Waterproofing