

View this email in your browser

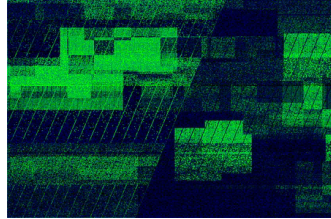


Designing Buildings Wiki

Newsletter 30 July 2019

Featured articles and news

Misunderstanding sustainability



Common misconceptions about BREEAM and sustainability.

Who delivers wellbeing?

FM's manage lighting, air quality, noise levels, thermal comfort and space.



Workplace design

Five infrastructure issues that can harm your reputation.



Tackling mental health

A macho culture can lead to depression and suicide.



Mental Health First Aid

Raising awareness and starting conversations about the support available.



Great Yarmouth Preservation Trust



Training partnerships with universities, NGOs and other organisations in Europe and Asia.

Around the web

Gov.uk, July 27

Boris Johnson pledges a new Manchester-Leeds rail route.

GCR, July 26

New South Wales' first high-rise school.

ICE, July 26

ICE president visits a new facility designed to boost skills.

CIAT, July 25

Tickets are on sale for CIAT's AT Awards 2019.

ECA, July 25

An enquiry has been launched into silica-dust deaths.

Construction Manager, July 25

Record-breaking 56m-long bridge girders.

CIOB, July 25

Esther McVey has been appointed housing minister.

RIBA, July 25

Architects must ensure they use the right contract.

RICS, July 25

Brexit is still adversely affecting market behaviour.

6.5 million people use Designing Buildings Wiki to find construction industry knowledge every year. [Write an article](#) and they will also find out about you.



Subscribe to this newsletter



Designing Buildings Wiki is supported by:

Rogers Stirk Harbour + Partners
Institution of Civil Engineers
BRE Trust

The Institute of Historic Building Conservation
Chartered Institute of Building
BSRIA
ECA

Chartered Institute of Architectural Technologists

Our mailing address is:
Designing Buildings
Kirkleas
Old Road
Buckland, Surrey RH3 7DZ
United Kingdom