

View this email in your browser



# Designing Buildings Wiki

Newsletter 23 August 2019

## Featured articles and news

### Transport assessments and travel plans



Encouraging access to local amenities and sustainable transport.

### Electrical installation

Vulnerable residents are at risk from an under-qualified workforce.



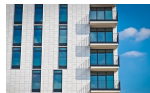
### Air permeability

How do we measure air tightness in buildings?



### Housing infrastructure fund

What effect will the new £600m have on housing?



### Raising the bar

The Competence Steering Group has published interim proposals to deliver safer buildings.



### 6.5 million users a year

Publish your thought leadership articles on Designing Buildings Wiki – for free.



## Around the web

### Gov.uk, Aug 21

The government announces an independent review of HS2.

### GCR, Aug 21

Fire is the biggest cause of loss for engineering claims.

### IHBC, Aug 20

RIBA publication showcases the contribution of architects to the built environment.

### CIAT, Aug 19

Historic England seeks views on CPD delivery.

### BIM Plus, Aug 20

Housing association to build plastic-free homes.

### SCN, Aug 21

Chinese fugitive's skyscraper sold in online auction.

### Construction Manager, Aug 19

World's largest land crane ready for Hinkley.

### City of London, Aug 20

The City Corporation launches the UK's first wind planning guidelines.

### TCI, Aug 20

Aecom prints a graphene arch.

## The Flourish Model to enhance wellbeing



Indoor environments should provide a multi-sensory experience.

6.5 million people use Designing Buildings Wiki to find construction industry knowledge every year. [Write an article](#) and they will also find out about you.



Subscribe to this newsletter